

CHROME

CONTENTS

| | |
|-------------------------|-----|
| FRONT-TO-REAR COVERS | 99 |
| LICENSE PLATES | 116 |

Unfinished
Prototypes Shown

CONSTELLATION
DRIVING LIGHTS
WITH TURN
SIGNALS PG.51



Rendering Shown -
final design may vary.

8687

FRONT CALIPER
COVER PG.104

LOWER FORK SKINS for VTX1300



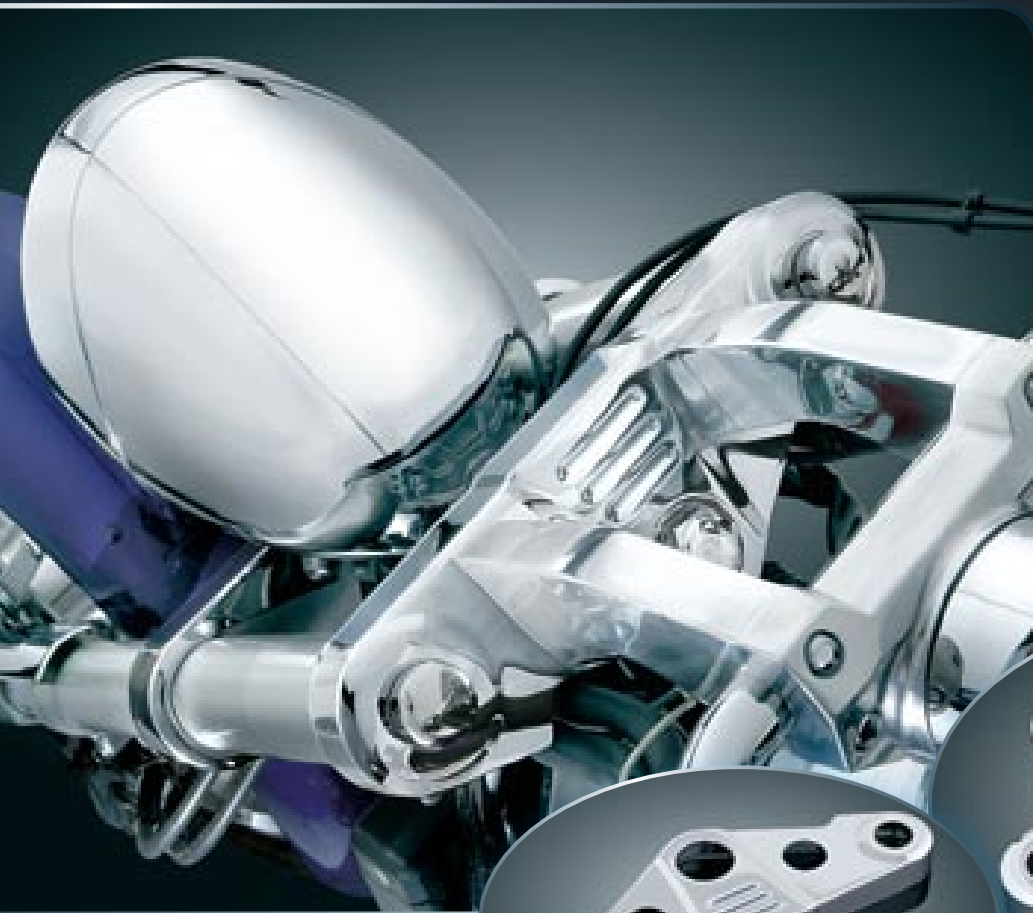
Patent Pending

Whether cruising or parked in a row of scooters, the bike with the chromed front end is the one that gets noticed. Kuryakyn Fork Skins achieve this level of flash without the expense & down time of chroming the stock fork components. Installation is a simple bolt on procedure that will have you turning heads in no time, & with plenty of ching left in your wallet!

| | | |
|------|---|----------|
| 8687 | Lower Fork Skins (set) Fits: '03-'08 VTX1300C | \$159.99 |
| 8689 | Lower Fork Skins (pr) Fits: '03-'08 VTX1300 Retro/S/T <i>Note: Does not include upper cover above fender mount bolts to maintain clearance for OEM fork shrouds.</i> | \$139.99 |

Note: See page 101 for VTX1800 fitments.

*Gray Parts Are
Unfinished Prototypes.
All Final Products Will
Be Chrome!*



TRIPLE TREE COVER SETS

For VTX

This is the ultimate front end dress-up kit for the VTX. We offer a 5-piece set that includes a one-piece cover for the top triple clamp, chrome fork tube caps, & covers for the lower triple clamp for the VTX1800C. We offer a 3-piece set that includes a one-piece cover for the top triple clamp & a pair of die-cast fork tube caps for the VTX1300. This kit provides the look of a custom chrome replacement triple tree set at a fraction of the cost & with significantly less work!

| | | |
|-------------|--|----------------|
| 8680 | Upper & Lower Triple Tree Cover Set (pr) Fits: '02-'08 VTX1800C/F | \$69.99 |
| 8681 | Upper Triple Tree Cover (ea) Fits: '03-'08 VTX1300R/S/T & '04-'08 VTX1300C | \$59.99 |

Note: Requires removal of handlebar/riser assembly & headlight mount during installation.



STILETTO AXLE CAPS

for VTX

For those with Stiletto ISO-Grip End Caps, here's an opportunity to make a stronger statement. Stiletto Axle Caps fit up closely to the sliders with no unsightly gaps.

Fits: All VTX1300/1800 Models

1207 | Stiletto Axle Caps (pr) | \$79.99



NEW

BULLET FORK COVERS

Fork Bullets are an excellent way to dress up your forks while hiding your axle bolt & hardware at the same time. Each bullet slips onto the end of your fork leg & attaches with a compression set screw. Installation is that easy!

Fits: Honda: All VTX1300, All VTX1800R, All '99-'08 Shadow 1100 & 750 Ace/Aero/Spirit, & All VLX600 Models

Kawasaki: '99-'08 Vulcan 800/1500 Classic/Drifter/Nomad, & 900 Classic

Suzuki: All '99-'08 Intruder 1400, 1500LC, & 800 Volusia

Yamaha: All '99-'08 Road Star 1600/1700, All '96-'01 Royal Star, '05-'07 Royal Star Tour Deluxe, '99-'08 Venture, All '98-'08 V Star 1100 Custom/Classic, & '07-'08 V Star 1300 Models

8678 | Bullet Fork Covers (pr) | \$139.99

BARON

HUB COVERS

for VTX1300S

Bring some flash to the spun aluminum hubs on your VTX1300. Our chrome-plated die-cast directional hub covers fit perfectly, giving you the benefit of custom wheels without the expense. Installation is quite simple but does require removing the front wheel.

1208 | Hub Covers for VTX1300S (pr) | \$69.99

Note: Not compatible with cast wheels.





Coordinate
These Products for
Fully Chromed
Front Forks!

Full 360°
Chrome Coverage!



SNAP-ON FORK COVERS NEW

For VTX1800

One doesn't see many full-on customs without a gleaming chrome front end. However, removal, disassembly, & the plating process means down time & significant cash outlay unless you use these slick Snap-On Chrome Fork Covers! They fit like a second skin, install in minutes, & the low price will leave you smiling! Choose smooth, full length covers with or without turn signal mounts.

Fits: All Honda '02-'08 VTX1800 Models

| | | |
|-------------|--|-----------------|
| 8685 | Snap-On Fork Tube Covers, Full Length Covers (set) <i>Note: Requires relocation of turn signals.</i> | \$179.99 |
| 8686 | Snap-On Fork Tube Covers, with Turn Signal Mounts (set) <i>Note: Turn signal mount allows installation of OEM turn signals, universal for 5/16"-18 mount bolt or Kuryakyn Constellation Driving Lights with Turn Signals Kit (P/N 5009).</i> | \$229.99 |

Note: Does not install with OEM chrome forks.



LOWER FORK SKINS NEW For VTX 1800

Patent Pending

Create a shining first impression. Whether parked or in motion, your front end is often the first thing people notice on your bike. Show it in it's best light with these attention grabbing chrome Lower Fork Skins. Used alone, or with our other chromed front end components, they will reflect well on you & your VTX.

Fits: All '02-'08 VTX1800 Models

8684 | Lower Fork Skins (pr) | **\$129.99**

Note: Removal of the stock slider shields is required for installation.



NEW

DRIVER FOOTPEG MOUNT COVERS

for VTX1300C

Finish off those unfinished welds on your driver footpeg mounts even if you aren't a skilled welder! Our new Driver Footpeg Mount Covers work great with stock pegs & also do wonders at showing off custom peg applications.

Fits: '03-'08 VTX1300C

7011 | Driver Footpeg Mount Covers (pr) | **\$49.99**



PETCOCK COVER

for VTX1300

Add the finishing touch to your drab fuel petcock by covering those unfinished parts with style. The left side of your tank will now look top class.

Fits: All '03-'08 VTX1300 Models

7830 | Petcock Cover for VTX1300 (ea) | **\$39.99**

HORN COVER

Making your presence known is a beautiful thing; but the horn itself sure isn't. This bolt-on chrome cover ensures your horn is heard, but not seen.

Fits: '98-'08 V Star 650 & '99-'08 V Star 1100 Models

8127 | Horn Cover (ea) | **\$39.99**



MEGA HORNS

Be heard loud & clear with our trumpet style horns for your ride. With new Mega Horn technology, get that loud air horn style sound in one little package. Installs swiftly in front of your motor along your front frame tubes. Ride on & be heard.

7736 | Mega Horns with Mount (ea) | **\$169.99**
Fits: Yamaha: All Road Star, V Star, & Raider Models

7737 | Mega Horns with Mount (ea) | **\$169.99**
Fits: Honda: All VTX1800/1300 Models
Kawasaki: All Vulcan 900 Models

Note: Engine guards may limit installation.

MARQUIS CHOKE KNOB COVER

U.S. Patent # Des. 5,836,214

Our attractive chrome Choke Knob Cover installs easily without removing or modifying the stock choke knob.

Fits: Honda: All VTX1300, '04-'08 Shadow 750 Aero/Spirit C2

Kawasaki: Vulcan 800/1500/1600

Yamaha: '99-'07 Road Star 1600/1700, Royal Star Venture, V Star 650/1100

2009 | Marquis Choke Knob Cover (ea) | **\$29.99**



V-SHIELD ENGINE COVER

A great way to spiff up the left side of your Vulcan 1500/1600, or VTX1800. Our V-Shield Cover adds a sinister look to the engine bay of your big, V-Twin Cruiser. Chrome-plated die-cast construction makes this stout looking piece a worthwhile addition.

7715 | V-Shield Cover Kit (ea) | **\$79.99**
Fits: '02-'05 VTX1800 (without radiator reservoir on left side of tank)

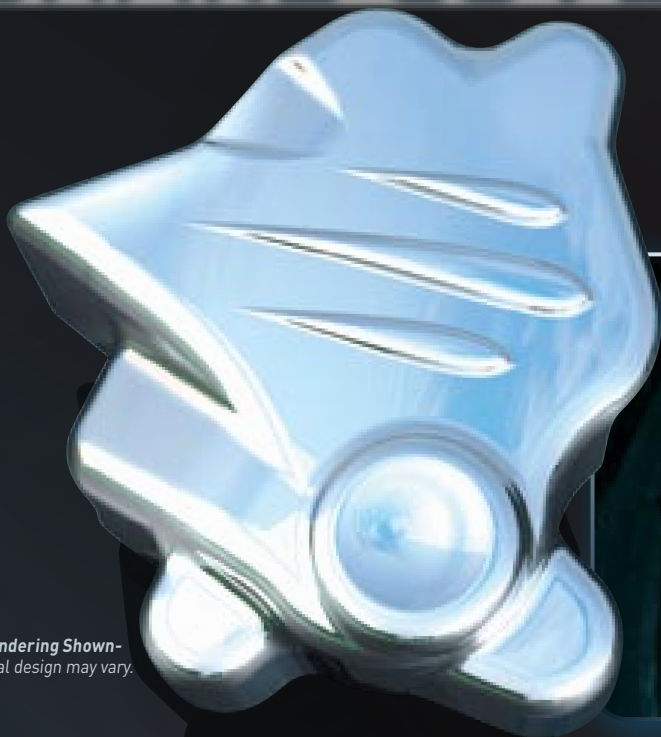
7717 | V-Shield Cover Kit (ea) | **\$79.99**
Fits: Vulcan 1500 or 1600 (with aftermarket air cleaner)
Note: Kawasaki applications relocates OEM horn to left side of engine. Intended only to be used if OEM air cleaner assembly has been removed & replaced with a Hypercharger or other right-side-only aftermarket air cleaner.



CHROME

BRAKE COVERS

CHROME . CHROME . CHROME .



Rendering Shown - final design may vary.

FRONT CALIPER COVER

For VTX1300

Details make the difference! In just a few minutes your front brake caliper can spring to life with this brilliant chrome cover. Styled to complement the Rear Caliper Cover, the pair provides a balanced, integrated look. Installation is a snap with high strength peel-&-stick adhesive.

Fits: All Honda '03-'08 VTX1300 Models

1284 | Front Caliper Cover for VTX1300 (ea) | **\$39.99**



Unfinished Prototypes Shown

Looks Great with Lower Fork Skins! See Page 99

FRONT CALIPER COVERS

For VTX1800

Perk up that front end by adding these super easy to install show-chrome Caliper Covers. You'll get a lot of compliments on these.

Fits: All '03-'08 VTX1800 Models (ex. Early '03 & '07-'08 Models or other Models with caliper bleeder screw between brake line fittings)

1298 | Caliper Covers for VTX1800 (pr) | **\$49.99**



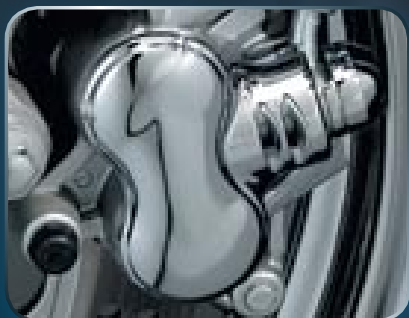
BRAKE LINE ACCENT COVERS

for VTX1800

Cover those bare stamped brackets holding your front brake lines to the forks with some blood grooved chrome. These little beauties really make a difference & clean up the lower front fork area.

Fits: All VTX1800 Models

7823 | Brake Line Accent Covers (pr) | **\$39.99**



CALIPER COVER

This wicked looking Caliper Cover installs in minutes. No tools required.

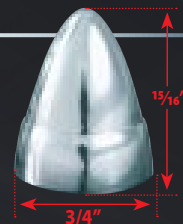
1294 | Front Caliper Cover (ea) | **\$19.99**
Fits: Kawasaki: All Vulcan 900/1500/1600
Suzuki: 800 Volusia/Boulevard C50/M50
Yamaha: V Star 1100/1300, Royal Star Venture

1296 | Front Caliper Cover (ea) | **\$24.99**
Fits: '96-'05 VLX600, '01-'03 VT750C, '02-'03 ACE Deluxe 750, '96-'03 750 Magna, '04-'08 Shadow Aero 750, '97-'99 ACE Tourer 1100, '99 Aero 1100, '02-'07 Sabre 1100

1297 | Front Caliper Cover (ea) | **\$24.99**
Fits: '96-'02 VT1100C & '03-'08 VTX1300

BULLET COVERS

for Bolts & Banjo Bolts



Add these smooth styled Bullet Bolt Covers to your bike in areas that need a little extra chrome to make it shine. Adds the finishing touches to Kuryakyn's Front Caliper Cover (P/N 1298).

1230 | Small Bullet Cover (ea) | **\$14.99**
Fits: All VTX1300/1800 Models - 12mm Brake Caliper Bolts, most 12mm & 7/16 Hex Bolts (Universal fit)

CHROME

BRAKE BLEEDER SCREW COVER & BANJO BOLT COVER



Easily installed, these pieces provide a nice detail when dressing up brake calipers & master cylinders on Metric Cruisers.

| | | |
|------|---|---------|
| 2013 | Bleeder Screw Covers (pr) | \$18.99 |
| 2018 | Bleeder Screw Cover (ea) | \$9.99 |
| 2015 | Banjo Bolt Cover (ea) Fits: Most Cruisers with Banjo Fittings Requiring a 12mm wrench | \$14.99 |



BRAKE COMPONENT DRESS-UP KIT for Honda & Kawasaki

These Dress-Up Kits for the VTX make artwork out of parts that are otherwise pretty dull. All kits include a replacement fluid reservoir cap & a wrap-around reservoir cover. The kit for the VTX1800C/F also places a streamlined cover on the master cylinder. All components feature a dazzling chrome finish.

| | | |
|------|--|---------|
| 7820 | Brake Dress-Up Kit (ea) Fits: '02-'08 VTX1800C/F | \$49.99 |
| 7821 | Brake Dress-Up Kit (ea) Fits: '03-'08 VTX1800 Retro/S/T | \$29.99 |
| 7826 | Rear Master Cylinder Cover (ea) Fits: '03-'08 VTX1300C/R/S/T | \$29.99 |
| 7822 | Brake Reservoir Cap (cap only) Fits: Honda: '03-'08 VTX1300, '02-'08 VTX1800 Kawasaki: '02-'08 Mean Streak, '03-'08 1600 Classic & Nomad | \$21.99 |

Fully Chrome Your Brake Parts!

REAR CALIPER COVER

Finish off that rear brake with our pure custom looking Rear Caliper Cover. You won't believe the difference!

| | | |
|------|--|---------|
| 1299 | Rear Brake Caliper Cover (ea) Fits: '02-'08 VTX1800 | \$39.99 |
| 1289 | Rear Caliper Cover (ea) Fits: '06-'08 Suzuki M109R | \$29.99 |



REAR MASTER CYLINDER COVER for Road Star

Class up & clean up your master cylinder & front motor area! Simply stick on the chrome cover, bolt on the chrome shroud, & get a clean finished look in minutes.

Fits: All '99-'08 Road Star 1600/1700 Models (ex. Warrior)

| | | |
|------|--|---------|
| 7825 | Rear Master Cylinder Covers for Road Star (ex. Warrior) (ea) | \$29.99 |
|------|--|---------|



REAR BRAKE CALIPER COVER for VTX1300

Flow chrome over that Rear Brake Caliper Cover & make it sparkle! Easy installation.

Fits: All '03-'08 VTX1300 Models

| | | |
|------|-------------------------------|---------|
| 1288 | Rear Brake Caliper Cover (ea) | \$39.99 |
|------|-------------------------------|---------|



ENGINE COVERS FOR VTX CHROME CHROME

Own a Show-Stopping Motor at a Reasonable Price!



Chromes Both Sides of Your Engine



ENGINE CASE COVERS

For VTX1300

Amaze everyone with the look of a new show-stopping chrome motor on your VTX1300. See both sides of your motor & even your clutch sparkle with chrome. No more drab gray areas around the heart of your motor any more.

Fits: All '03-'08 VTX1300 Models

| | | |
|-------------|---------------------------|-----------------|
| 7703 | Engine Case Covers | \$189.99 |
|-------------|---------------------------|-----------------|



ENGINE COVER INSERTS

For VTX1300 & 1800

Dress up your plain chrome engine covers with these racy, speed-lined engine cover inserts. Sold in sets of 3, our molded ABS chrome-plated inserts stick to the smooth clutch, timing, & left crankcase covers adding depth & a "machined from billet" look. Easily installed without tools.

| | | |
|-------------|--|----------------|
| 7707 | Engine Cover Inserts (set/3) Fits: All '02-'08 VTX1800 Models | \$89.99 |
|-------------|--|----------------|

| | | |
|-------------|--|----------------|
| 7708 | Engine Cover Inserts (set/3) Fits: All '03-'08 VTX1300 Models | \$89.99 |
|-------------|--|----------------|

CHROME



MID CYLINDER TRIM for VTX1800

Define the powerful heads & add some flashy chrome to the middle of your motor's cylinders with our Mid Cylinder Trim.

Fits: '02-'08 VTX1800 Models

7730 | Mid Cylinder Trim for VTX1800 (Set/4) | **\$79.99**



SPARK PLUG COVERS for VTX1800

Replace your plain stock spark plug covers with these trick custom covers with colored L.E.D. backlighting. The slotted design is accented by a colored L.E.D. glow - pure high tech! Installation is a snap.

Fits: All '02-'08 VTX1800 Models (set/4)

| | | |
|-------------|--------------------------------------|-----------------|
| 7720 | Unlit (set) | \$59.99 |
| 7721 | Red/Blue L.E.D. Backlit (set) | \$129.99 |
| 7722 | Red L.E.D. Backlit (set) | \$129.99 |
| 7723 | Blue L.E.D. Backlit (set) | \$129.99 |
| 7724 | Amber L.E.D. Backlit (set) | \$129.99 |

MOTOR MOUNT ACCENTS for VTX1800

Cover the plain black motor mounts while also filling in some of the "dead space" around your engine with these chrome-plated, precision-cut accents. A kit with just the rear mount covers is available also.

Fits: All '02-'08 VTX1800 Models

1546 | Motor Mount Accents for VTX1800 (set /4) | **\$69.99**

Note: Only the rear 2 motor mount accents will install with Engine Case Covers, P/N 7704.



ENGINE CASE COVERS for VTX1800

Complete the creamy, luscious appearance of your VTX1800 with these ultimate Engine Case Covers! Fit snugly along the base of the engine below the fins on both sides. They look like expensive chromed-engine cases, but they bolt on in minutes & cost a heck of a lot less.

Fits: All '02-'08 VTX1800 Models

7704 | Engine Case Covers | **\$189.99**

*Chromes
Both Sides
of Your Engine*



CLUTCH HOUSING SHROUD for VTX1800

We designed this part to finish the job started by our Engine Case Covers. Made of stamped steel with chrome-plated construction, this piece installs quickly & easily with industrial strength adhesive tape to perfectly cover the exposed upper surface of the clutch housing.

Fits: All '02-'08 VTX1800 Models

7709 | Clutch Housing Shroud (ea) | **\$69.99**

Note: Intended only for use with our Engine Case Covers (P/N 7704).

CYLINDER BASE COVERS

for Road Star

Flow chrome across the left side of your motor & atop your transmission to get that expensive chromed motor look in minutes! Add our Tappet Block Covers (P/N 7728) for enhanced sparkle on the right side. You will be amazed at the difference these make.

Fits: All '99-'08 Road Star 1600/1700 & '02-'08 Road Star Warrior Models

7729 | **Cylinder Base Covers (set)** | **\$99.99**

Note: Fully dress your motor with additional Yamaha OEM chrome motor covers.



Removes the Extra Clutter!

STARTER COVER

for Road Star

Crown the end of your starter with this stylish chrome top & reveal a new clean chrome appearance. Use the two block-off plates to remove the rubber hoses next to your starter & all the clutter between your frame tubes & the front cylinder jug. Coordinates with Kuryakyn Cylinder Base Covers (P/N 7729).

Fits: All '99-'07 Road Star Models (ex. Warrior)

7727 | **Starter Cover for Road Star (ea)** | **\$69.99**

Note: Installation of this accessory or any emissions modifications may be in violation of local regulations. Please check your local laws.



1544

1549



REGULATOR COVER

for Road Star

Add sparkle to your regulator with these traditional fin style Regulator Covers! They contain slots to allow ample air flow to keep your regulator cool & functional.

1544 | **Regulator Cover (ea)** | **\$39.99**

Fits: All '99-'07 Road Star Models (ex. Warrior)

1549 | **Regulator Cover (ea)** | **\$39.99**

Fits: '99-'03 Road Star 1600

FINNED SPARK PLUG COVERS

for Road Star 1700

Fill the gaping hole around your spark plugs & amaze your friends with the clean full look of your motor. Simple installation.

7761 | **Finned Spark Plug Covers (pr)** | **\$69.99**

Fits: All '04-'07 Road Star 1700 (ex. Warrior)



Prototype Shown - final design may vary.

SHIFT ROD LINKAGE

for Road Star

This stunning stainless steel shift linkage with a sinister Zombie or Widow chromed emblem will let everyone know how bad you are. With direct replacement installation, let a little of your dark side out.

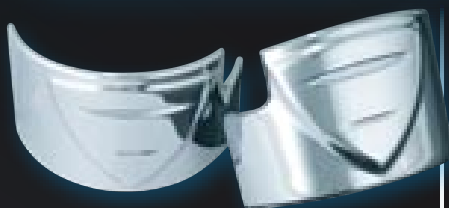
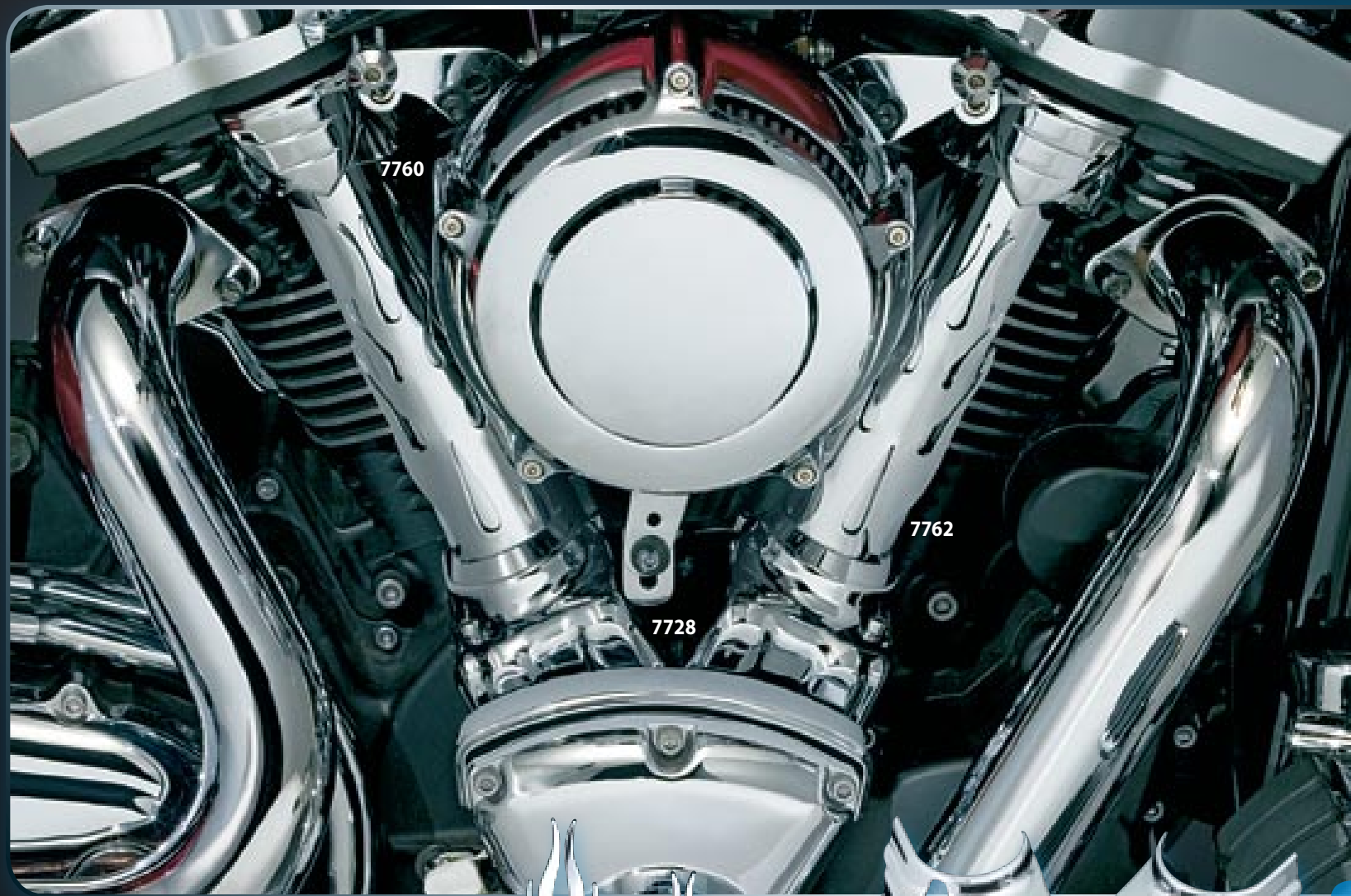
Fits: All '99-'08 Road Star 1600/1700 (ex. Warrior)

1061 | **Widow Shift Rod Linkage (ea)** | **\$89.99**

1062 | **Zombie Shift Rod Linkage (ea)** | **\$89.99**

CHROME

ENGINE COVERS FOR YAMAHA



PUSHROD TOP COVERS for Road Star

Connect the chrome between your valve covers & push rod tubes on the right side of your motor & cover that large black void. These little accents will really class up your ride.

| | | |
|-------------|--|----------------|
| 7759 | Pushrod Top Covers (pr) Fits: '99-'03 Road Star 1600 Models | \$39.99 |
| 7760 | Pushrod Top Covers (pr) Fits: '04-'07 Road Star 1700 Models (ex. Warrior) | \$39.99 |



FLAMED TUBE ACCENTS

Customize your Road Star pushrod tubes or other 2" diameter tubes. No chintzy plastic stickers here, these chromed metal flames are the real deal & install in minutes.

Fits: Yamaha: All Road Star/Road Star Warrior/Roadliner/Stratoliner/Raider
Universal: Applications with 2" diameter tubes

| | | |
|-------------|---------------------------------|----------------|
| 7762 | Flamed Tube Accents (pr) | \$39.99 |
|-------------|---------------------------------|----------------|

Note: Not recommended for use on exhaust pipes.



TAPPET BLOCK COVERS for Yamaha

Add some sparkle to the right side of your motor with these stylized chrome Tappet Block Covers & trim piece. Bolt directly over the bottom of your pushrod tubes & stand back to admire the chrome flowing from your pushrod tubes all the way down your bike. Add the Cylinder Base Covers (P/N 7729) to complete the new chromed base of your motor.

| | | |
|-------------|--|----------------|
| 7728 | Tappet Block Covers (set) Fits: All '99-'08 Road Star 1600/1700 & '02-'08 Road Star Warrior Models | \$89.99 |
| 7726 | Tappet Block Covers (pr) Fits: '06-'08 Roadliner, Stratoliner, '08 Raider, All '04-'08 Road Star 1700, '02-'08 Road Star Warrior Models (Includes 1 pair of Tappet Block Bottom Accents only- no lower trim) | \$79.99 |

CHROME

REAR FRAME COVERS FOR VTX

Chrome Your VTX Rear End!



SWINGARM COVER for VTX

Your friends are going to think you went out & bought a whole custom swingarm with this show-chrome cover. It will set you apart & is the perfect complement to our Drive Shaft Cover (P/N 8285).

Fits: All '03-'08 VTX1300 & '02-'08 VTX1800 Models

8287 | Swingarm Cover for VTX (ea) | \$99.99

FRAME TRIM for VTX

Transform that rough black frame forging into a sleek, stylish, attention getter. This two-piece kit attaches with high-strength, high temp adhesive for quick & easy installation.



8260 | Frame Trim for All VTX1800 (set) | \$79.99
8305 | Frame Trim for All VTX1300 (set) | \$79.99

NEW

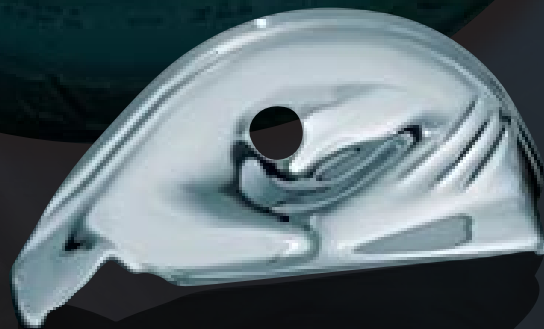
DRIVE HUB TOP COVER for VTX

Patent Pending

Imagine a great football team with no quarterback. Adding one key player can create a legendary combination. Announcing Kuryakyn's new top draft pick; the Drive Hub Top Cover for the VTX. Add this new player to your bike & our gleaming Chrome Drive Shaft Cover (P/N 8285), & this team could be on its way to the playoffs!

Fits: All Honda VTX1300/1800 Models with Kuryakyn Drive Shaft Cover (P/N 8285)

8688 | Drive Hub Top Cover for VTX (ea) | \$89.99



DRIVE SHAFT COVER for VTX

U.S. Patent # D549,622

Compare our Drive Shaft Cover to others on the market. This setup sets a whole new standard. Two-piece, chrome-plated stamped steel construction covers both the differential & shaft tube giving the appearance of a completely chromed assembly.

Fits: All '03-'08 VTX1300 & '02-'08 VTX1800 Models

8285 | Drive Shaft Cover for VTX (ea) | \$139.99



REAR FRAME COVERS FOR ROAD STAR . CHROME

Chrome Your Rear End!



BOOMERANG FRAME TRIM for Road Star

Patent Pending

Chrome your rear frame supports with smooth elegant beauty the simplest way possible! These metal covers bolt directly over your bland frame & include all the hardware you will need for a seamless installation. You'll get the look of a custom chromed frame for a fraction of the cost!

Fits: All '99-'08 Road Star 1600/1700 Models (ex. Warrior)

8662 | Boomerang Frame Trim for Road Star (set) | \$199.99

FRONT DRIVE PULLEY COVER

Customize your Road Star & add some class with the look of motion to your front drive pulley cover. Installation will take you seconds & you'll be amazed at the difference!

Fits: All '99-'08 Road Star 1600/1700 Models (ex. Warrior)

8960 | Front Drive Pulley Cover for Road Star (ea) | \$49.99



PHANTOM COVERS

for Road Star

Add the finishing touches to the tail end of your swingarm & smooth out those lines. These little beauties cover up the axle, adjustment bolts, & rough casting in one easy step.

Fits: All Road Star Models (ex. Warrior)

8229 | Phantom Covers for Road Star (pr) | \$79.99

Fits: All '99-'08 Road Star (ex. Warrior)
Note: Right side on '07-'08 Models requires aftermarket exhaust with 1" clearance from axle nut.

8665 | Phantom Covers for Road Star (pr) | \$79.99

Fits: All '99-'08 Road Star (ex. Warrior) with stock exhaust or other that covers right rear axle bolt

Note: When checking for appropriate clearance, please remember swingarms move separate from your exhaust mounts. Compress & extend suspension for proper clearance.



LOWER SWINGARM COVER EXTENSION

for Road Star

Finish chroming the lower right frame tube to completely chrome your swingarm. This addition looks great with custom exhaust applications that allow the full swingarm to be seen. Simple installation. Looks great alone or even better with Kuryakyn Swingarm Covers on your Road Star.

Fits: Motorcycles with existing Kuryakyn Swingarm Covers (P/N 8262 or 8664)

8661 | Swingarm Cover Tube Tip for Road Star (ex. Warrior) (ea) | \$29.99

Note: P/N 8661 is included in Swingarm Covers Set (P/N 8262).



Rendering Shown - final design may vary.

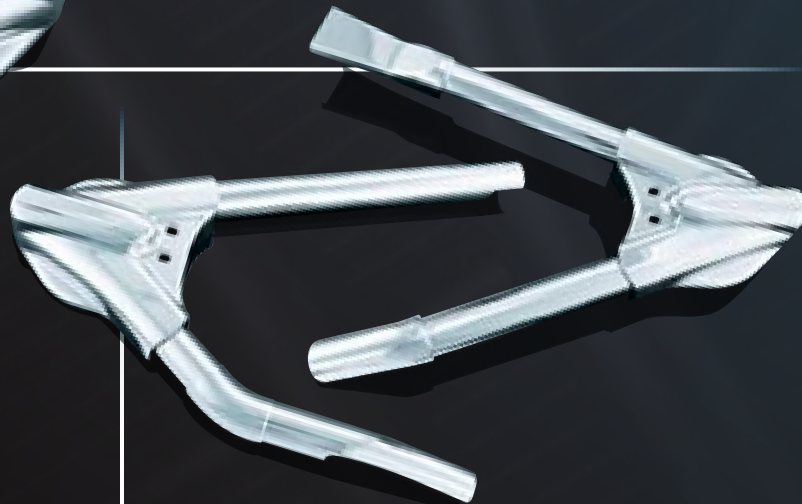
LOWER BELT GUARD ACCENT

for Road Star

Want to sparkle up that drab stock belt guard? This accent is easily added to the lower belt guard to protect the OEM belt while covering the black plastic. WOW! What a difference!

Fits: All '99-'08 Road Star 1600/1700 Models (ex. Warrior)

8663 | Lower Belt Guard Accents for Road Star (ea) | \$89.99



SWINGARM COVERS

for Road Star

Want the appearance of an expensive chrome swingarm without the hassle of tearing apart the back end of your bike? Chrome your whole visible swingarm with our Swingarm Cover Kit & add that extra shine in minutes for a fraction of the price.

8262 | Swingarm Cover for Road Star (set) | \$159.99
Fits: All '99-'08 Road Star (ex. Warrior)
Note: Right side on '07-'08 Models requires aftermarket exhaust with 1" clearance from axle nut.

8664 | Swingarm Covers for Road Star (set) | \$159.99
Fits: All '99-'08 Road Star (ex. Warrior) with stock exhaust or other that covers right rear axle bolt

Note: When checking for appropriate clearance, please remember swingarms move separate from your exhaust mounts. Compress & extend suspension for proper clearance.

Adjustable Foot Position



PASSENGER PEG MOUNTS

for Road Star

You asked for them so we made 'em! Move your passenger footpeg mounts forward 3-1/2" & down 1-1/4" or forward 1/2" & down 1-1/4" for added passenger comfort. With custom pipes lower than stock, flip the bracket down for a full 3-3/4" lower foot position.

Fits: All '99-'08 Road Star 1600/1700 Models (ex. Warrior)

4560 | Passenger Peg Mounts for Road Star (pr) | \$99.99

Note: Requires Male Mount Pegs, page 98.



REAR FRAME COVERS FOR V STAR . C H R O M E . C



8203

8286

PHANTOM COVERS for V Star

These awesome rear axle/hub covers work wonders on the back wheels of V Star 1100's & 650's alike. They turn a hodge-podge of fasteners, frame tubes, axles, hubs etc. into one smooth-sculpted chrome cover. The kit also includes covers to hide the bolt heads that secure the drive housing to the swingarm. Combine these with our Boomerang Frame Covers & you'll have one seriously hot lookin' scooter on your hands!

Fits: '98-'05 V Star 650, '99-'05 V Star 1100, '06-'08 V Star 650 & 1100 (Right side requires aftermarket exhaust that allows 3/4" clearance from exhaust mount bracket & axle nut)

8203 Phantom Covers for V-Star 650 & V Star 1100 (pr) \$79.99

Note: When checking for appropriate clearance on '06-'08 Models please remember swingarms move separate from your exhaust mounts. Compress & uncompress suspension for proper clearance.

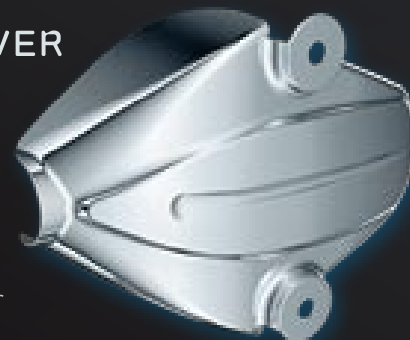


SHAFT DRIVE COVER for V Star U.S. Patent # D549,621

Give the rear differential the effect of a chromed housing at a fraction of the cost. Our Shaft Drive Cover integrates nicely with the design of our Phantom Covers for the V Star. Easy add-on with a two-bolt installation.

Fits: '99-'08 V Star 1100 & '98-'08 V Star 650 Models

8286 Shaft Drive Cover for V Star (ea) \$79.99



8236

BOOMERANG FRAME COVERS for V Star 650 & 1100

This dazzling chrome accent will really make your bike stand out from the rest. Easily installed, these show-chromed, die-cast frame covers make artwork out of a part of your bike that would otherwise fade into the background. The kit for the V Star 1100 includes a pair of upper frame covers that smooth the transition from the Boomerang Frame Cover to the fender. These really "pop" when combined with our Phantom Covers!

8236 Boomerang Frame Covers (pr) \$99.99
Fits: V Star 650

8237 Boomerang Frame Covers (pr) \$159.99
Fits: V Star 1100



MID-FRAME COVERS for V Star 1100

Turn that drab black frame tube under your seat into a real eye catcher. It looks so real that you can hardly tell it's just a cover. When added to our Boomerang Frame Cover, it looks like you've chromed the whole frame! Quick & simple to install.

Fits: All '99-'08 V Star 1100 Models

8255 Mid-Frame Covers for V Star 1100 (pr) \$69.99



CHROME

LICENSE PLATES

CHROME



CURVED TIP-BACK LICENSE PLATE FRAME

NEW

Add the Curved Tip-Back License Plate Frame & smooth out the back of your fender. With 8° of angle & a curved frame, this chrome beauty holds a 4" x 7" plate & bolts directly to your stock OEM license plate mount.

Fits: Bolts directly to flat stock OEM license plate mount

9198 | Curved Tip-Back License Plate Frame (ea) | **\$69.99**

Works Great on Short Bobtail Fenders Too!



Side View



NEW

L.E.D. LICENSE PLATE ILLUMINATORS with Red Accent Lights

Each License Plate Illuminator has two L.E.D.'s. The white L.E.D. lights up the license plate & the rear-facing red L.E.D. can function as an auxiliary running light, turn signal, or brake light for added visibility. The 1/4"-20 mounting stud makes it simple to bolt them on, wire them in, & ride on!

9399 | L.E.D. License Plate Bolt Lights with Red Accent Light (pr) | **\$29.99**



License Plate Light with Additional Red Rear-Facing Light!

WixTech

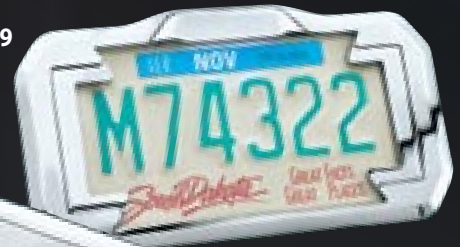
LICENSE PLATE FRAMES

Dress up your license plate from the front, back, & sides with these die-cast, chrome-plated frames. This License Plate Frame includes back plate, frame, & removable inserts that allow it to accommodate both small (4" x 7") & large (4-3/8" x 8") plates. Pick the lighted frame & light the plate with brilliant L.E.D.'s. This frame is perfect for use on our License Plate Holders (P/N 9165). See page 117.

9158 | License Plate Frame (ea) | **\$59.99**
9159 | Lighted License Plate Frame (ea) | **\$89.99**

Note: Can only be installed on license plate mounts less than 8-1/4" wide allowing unobstructed access to the back of the plate.

9159



9158



Lit or Unlit!

L.E.D. LICENSE PLATE BOLT LIGHTS

Light up your license plate whether it's in the stock location or custom mounted with these white L.E.D. bolt lights. With simple installation & lean look, you won't find a cleaner license plate lighting option.

9199 | L.E.D. License Plate Bolt Lights (pr) | **\$19.99**



CHROME



LICENSE PLATE HELMET LOCK WITH MOUNT

Add this License Plate Helmet Lock & conveniently lock your helmet to your motorcycle. The simple little mounting plate easily bolts to the back of almost any motorcycle & allows the easiest access for locking your helmet.

4248 | License Plate Helmet Lock (ea) | \$39.99

Note: Will not install with Curved License Plate Frames or Swept/Lone Eagle License Plate Frames.



LICENSE PLATE MARKER LIGHT/TURN SIGNAL MOUNT

Mount auxiliary marker lights or turn signals to your license plate & open up that saddlebag area or just streamline your rear fender. This simple system mounts directly to the back of your license plate with support backing plate & two side mount brackets. The side mount brackets have a 3/8" hole & will accept Kuryakyn Silver Bullets or L.E.D. Mini Bullets on pages 52, 53, & 55 (sold separately).

4247 | License Plate Marker Light Mount (ea) | \$39.99

Note: Will not install with Curved License Plate Frames or Swept/Lone Eagle License Plate Frames.



LICENSE FRAME

This baby streamlines & cleans up your plate beautifully. You'll find our all-stainless hardware superior to any other brand. This is what counts years down the road.

Fits: 4" x 7" Plates

9166 | License Frame & Back Plate Set (ea) | \$19.99

LIGHTED LICENSE PLATE FRAME

This chrome die-cast license plate frame incorporates two high intensity light bulbs that are wired separately. Wire one each to your brake & tail lamp circuits or together for an extra bright stop or running light.

Fits: 4" x 7" Plates

9167 | Lighted License Plate Frame (ea) | \$39.99

9169 | Replacement Bulb for 9167 (ea) | \$1.99

Note: Not intended to replace OEM brake or taillight.



CHROME



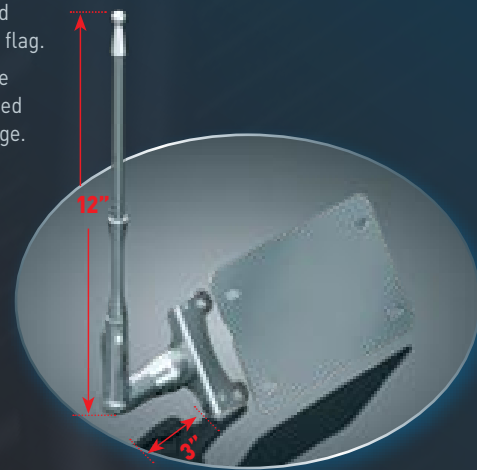
LICENSE PLATE MOUNTED FLAG

Show your patriotism by adding this American flag to the license plate of almost any motorcycle. The mount bracket & support plate bolt in behind the license plate quickly & easily. The angle of the 12" staff can be adjusted without tools. Includes a 4-1/2" x 8-1/2" American flag.

Universal application. Be sure motorcycle's license plate mount is sturdy enough to support force applied by flag at speed. Required clearances shown on image.

4249 License Plate Mounted Flag (ea) | **\$89.99**

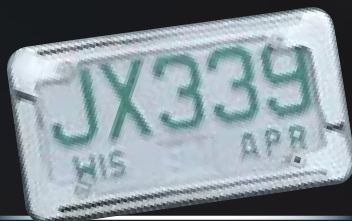
Note: Will not install with Curved License Plate Frames or Swept/Lone Eagle License Plate Frames.



LICENSE PLATE FRAMES

This frame is offered in two sizes; to fit 4-3/8" x 8" & 4" x 7" plates. Depending on which plate you're working with, some minor modifications may be necessary, but this will make many installations much easier. Chrome with ball-milled accents.

| | | |
|-------------|---------------------------------------|----------------|
| 9164 | Large License Plate Frame (ea) | \$29.99 |
| 9163 | Small License Plate Frame (ea) | \$29.99 |



INSPECTION STICKER PLATE

This small chrome display bracket mounts cleanly in any location dictated by local or state regulations. Don't mess up a nice paint job or chrome surface with some cheesy government sticker! Universal fitment.

| | | |
|-------------|---|----------------|
| 9168 | Inspection Plate (ea) (3-1/2" x 3-1/2") | \$39.99 |
| 9162 | Texas Inspection Plate (ea) (2-7/8" x 4") | \$39.99 |

SWEPT EAGLE License Plate Frame

This contemporary Swept Eagle License Plate Frame can be the final touch you need. The frame is chrome-plated ABS & backing plate is chrome-plated steel. The backing plate is drilled for universal mounting or it can be mounted in place of the stock license plate bracket.

Fits: 4" x 7" Plates

3161 Swept Eagle License Plate Frame (ea) | **\$59.99**



LONE EAGLE License Plate Frame

Show your American pride with this beauty! This universal plate frame features a chrome-plated ABS outer frame & chrome-plated steel backing plate. The backing plate is drilled for universal mounting or it can be mounted in place of the stock license plate bracket.

Fits: 4" x 7" Plates

3160 Lone Eagle License Plate Frame (ea) | **\$59.99**

CHROME

SIDE MOUNT LICENSE PLATE HOLDERS

LIGHTED VERTICAL SIDE MOUNT LICENSE PLATE HOLDERS

Customize your ride & relocate your license plate to the sleek side mount position. Choose the look you want with the features you need from the 3 different designs shown. With built-in license plate lights these holders keep your plate visible in one clean package. Choose the curved or flat holder with built-in brake light for added convenience & visibility.

Fits: License Plate Holder requires motorcycle specific mount, found below.

| | | |
|-------------|---|-----------------|
| 9005 | Lighted Curved Vertical Side Mount (ea) | \$109.99 |
| 9006 | Lighted Flat Vertical Side Mount with Brake Light (ea) | \$129.99 |
| 9007 | Lighted Curved Vertical Side Mount with Brake Light (ea) | \$149.99 |

Note: Not intended for use with saddlebags.



Install P/N 9007 with Taillight on Top or Bottom of License Plate!



9007

9007

Unlit/Lit

9005

9006



3175

MOUNT FOR VERTICAL SIDE MOUNT LICENSE PLATE

| | | |
|-------------|---|----------------|
| 3174 | Fits: All Honda VTX1300/1800 (ea) | \$29.99 |
| 3175 | Fits: Yamaha Road Star without swingarm covers (ex. Warrior) & other motorcycles with 1-1/4" diameter swingarms (ea) | \$29.99 |
| 3176 | Fits: Yamaha V Star 1100/650 (ea) | \$29.99 |
| 3177 | Fits: Yamaha Road Star (ex. Warrior) with Kuryakyn Swingarm Covers (P/N 8262 & 8664) | \$29.99 |
| 3182 | Fits: All Kawasaki '07-'08 Vulcan 900 Models & All '04-'08 Vulcan 2000 Models | \$29.99 |

Note: Mounts are motorcycle specific & designed to work with Kuryakyn Side Mount License Plate Holders (P/N 9005, 9006, or 9007). Not intended for use with motorcycles that have saddlebags.



VERTICAL SIDE MOUNT LICENSE PLATE HOLDER WITH LIGHTS

If they zig, you can zag by moving your license plate off the rear fender to the side. This side-mount license holder with light creates a show-bike look & adds visibility with a red L.E.D. run & brake light complete with license plate illumination. It's smooth design shows no visible fasteners around the plate. Removable inserts allow it to accommodate both small (4" x 7") & large (4-3/8" x 8") plates.

| | | |
|-------------|---|-----------------|
| 9154 | Fits: '99-'08 Road Star (ex. Warrior) & other motorcycles with 1-1/4" diameter swingarms | \$129.99 |
|-------------|---|-----------------|

Note: Does not install on Motorcycles equipped with Swingarm Covers (P/N 8664 & 8262). Applications with Swingarm Covers require Kuryakyn Lighted Flat Vertical Side Mount with Brake Light (P/N 9006) & Mount for Vertical Side Mount License Plate (P/N 3177).



CHROME